

# GLOBE VALVES WITH FLANGES

Nominal diameter options (DN) 15-250  
 Nominal pressure options (PN) 10-16-40  
 Maximum working temperature 200°C- 400°C

#### Applications:

- » Water plants
- » Steam plants
- » Industrial technologies
- » Heat engineering
- » Power engineering

All globe valves correspond to the pressure equipment directive 97/23/EC.

#### Material options:

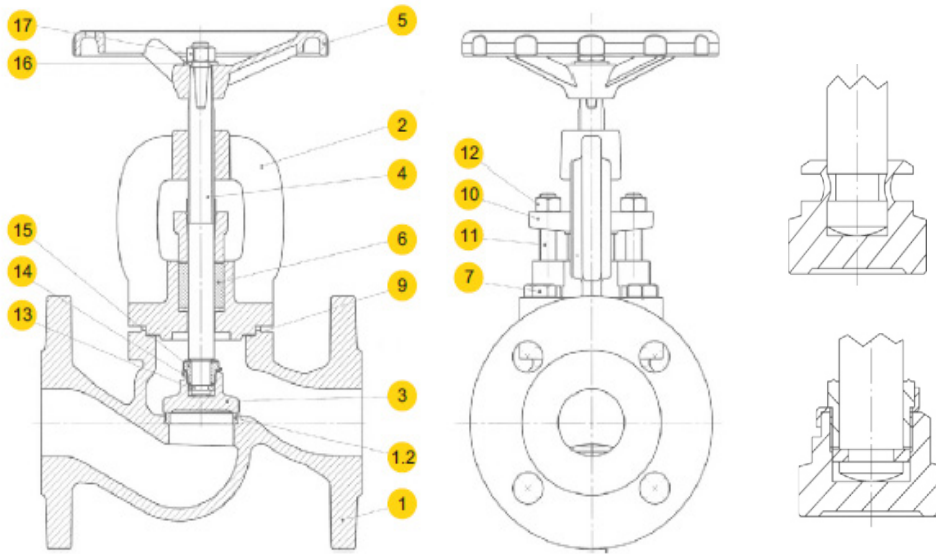
- A) 011401 grey cast iron
- B) 01215 nodular cast iron
- C) 01201 bronze
- D) 011430 cast steel
- E) 01401 stainless steel



## FEATURES

Fig. number	Body material	Nominal pressure PN	Nominal diameter DN	Max. temperature
011401	A) Grey cast iron	PN16	DN15-300	300 °C
01215	B) Nodular cast iron	PN16 PN25	DN15-300	350 °C
01201	C) Bronze	PN10 PN16	DN15-300	225 °C
011430	D) Cast steel	PN16 PN25 PN40	DN15-300	400 °C
01401	E) Stainless steel	PN16/40	DN15-300	200 °C

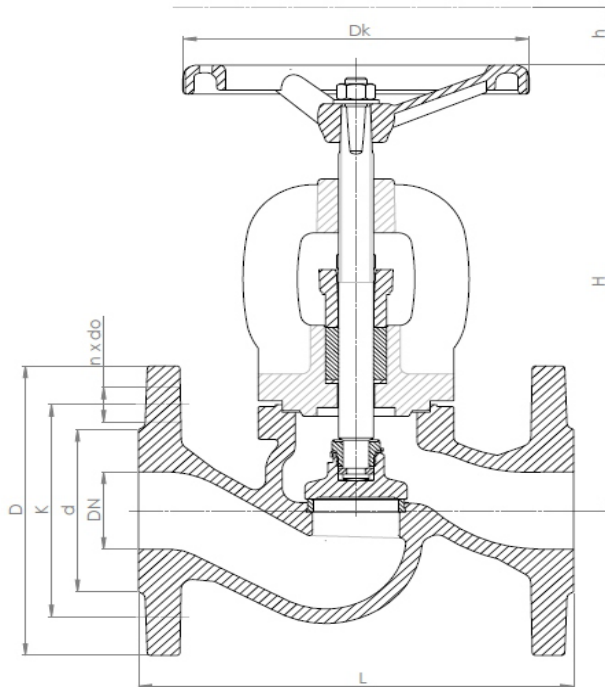
Globe valve can be equipped with hydraulic, pneumatic or electric actuator.  
 Ask more from ECONOSTO Oy sales personnel.



### MATERIALS AND PARTS

A) Grey cast iron Fig. 011401  
 B) Nodular cast iron Fig. 01215  
 C) Bronze Fig. 01201

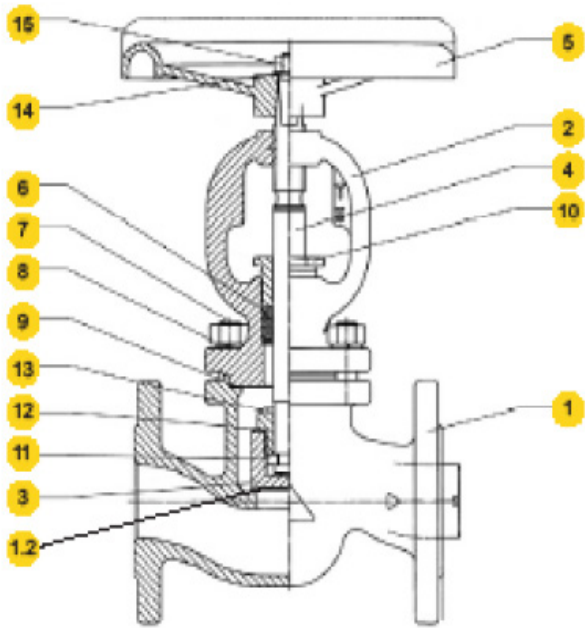
	Part	A - Fig. 011401		B - Fig. 01215		C - Fig. 01201
1	Body	EN-GJL-250 JL1040		EN-GJS-400-18-LT JS1025		CuSn5Zn5Pb5-C CC491K
1.2	Seat ring	X12Cr13 1.4006	CuSn10-C CC480K	X12Cr13 1.4006	CuSn10-C CC480K	CuSn5Zn5Pb5-C CC491K
2	Bonnet	EN-GJL-250 JL1040		EN-GJS-400-18-LT JS1025		CuSn5Zn5Pb5-C CC491K
3	Disc	X20Cr13 1.4021	CuSn10-C CC480K	X20Cr13 1.4021	CuSn10-C CC480K	CuSn5Zn5Pb5-C CC491K
4	Stem	X20Cr13 1.4021	CuZn40Mn1,5 CuSn10-C CC480K	X20Cr13 1.4021	CuZn40Mn1,5 CuSn10-C CC480K	CuZn35Ni
5	Hand-wheel	EN-GJS500-7 JS1050		EN-GJS500-7 JS1050		EN-GJS500-7 JS1050
6	Gland packing	Graphite		Graphite		Graphite
7	Hexagon bolt	8.8		A2-70	8.8	A2-70
9	Gasket	Graphite + NiCr		Graphite + NiCr		Graphite + NiCr
10	Gland	EN-GJL-250 JL1040		EN-GJS-400-18-LT JS1025		CuSn5Zn5Pb5-C CC491K
11	T-bolt	5.8 + zinc galvanised		5.8 + zinc galvanised		A2-70
12	Nut	8 + zinc galvanised		8 + zinc galvanised		A2-70
13	Ring	X20Cr13 1.4021	CuSn10-C CC480K	X20Cr13 1.4021	CuSn10-C CC480K	CuSn5Zn5Pb5-C CC491K
14	Washer	X6CrNiTi18-10 1.4541	CuSn6	X6CrNiTi18-10 1.4541	CuSn6	CuSn6
15	Screw	X20Cr13 1.4021	CuSn10-C CC480K	X20Cr13 1.4021	CuSn10-C CC480K	CuSn5Zn5Pb5-C CC491K
16	Washer	Carbon steel + zinc galvanised		Carbon steel + zinc galvanised		X5CrNi18-10 1.4301
17	Nut	8 + zinc galvanised		8 + zinc galvanised		A2-70
	Max. °C	300 °C   300 °C   225 °C		350 °C   225 °C   225 °C		200 °C



### DIMENSIONS

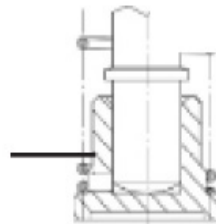
- A) Grey cast iron Fig. 011401
- B) Nodular cast iron Fig. 01215
- C) Bronze Fig. 01201

DN	PN6				PN16				PN25				PN6, 16, 25					
	D	d	K	n x d	D	d	K	n x d	D	d	K	n x d	Dk	h	L	H	KG	m <sup>3</sup> /h
15	80	38	55	4x11	95	46	65	4x14	95	46	65	4x14	100	5	130	167	3,3	5,9
20	90	48	65	4x11	105	56	75	4x14	105	56	75	4x14	100	5,5	150	167	3,9	7,4
25	100	58	75	4x11	115	65	85	4x14	115	65	85	4x14	120	7	160	175	5,0	13,0
32	120	69	90	4x14	140	76	100	4x19	140	76	100	4x19	120	14	180	186	6,6	18,0
40	130	78	100	4x14	150	84	110	4x19	150	84	110	4x19	160	20	200	235	8,4	30,0
50	140	88	110	4x14	165	99	125	4x19	165	99	125	4x19	160	25	230	248	12,0	41,0
65	160	108	130	4x14	185	118	145	4x19	185	118	145	8x19	180	35	290	260	17,3	79,0
80	190	124	150	4x19	200	132	160	8x19	200	132	160	8x19	200	41	310	291	22,7	115
100	210	144	170	4x19	220	156	180	8x19	235	156	190	8x23	250	31	350	338	35,8	181
125	240	174	200	8x19	250	184	210	8x19	270	184	220	8x28	250	48	400	384	52,8	225
150	265	199	225	8x19	285	211	240	8x23	300	211	250	8x28	320	54	480	429	74,2	364
200	320	254	280	8x19	340	266	295	12x23	360	274	310	12x28	360	77	600	529	126	690
250	-	-	-		405	319	355	12x28	-	-	-	-	360	120	730	638	200	1010
300	-	-	-		460	370	410	12x28	-	-	-	-	500	120	850	710	315	1460

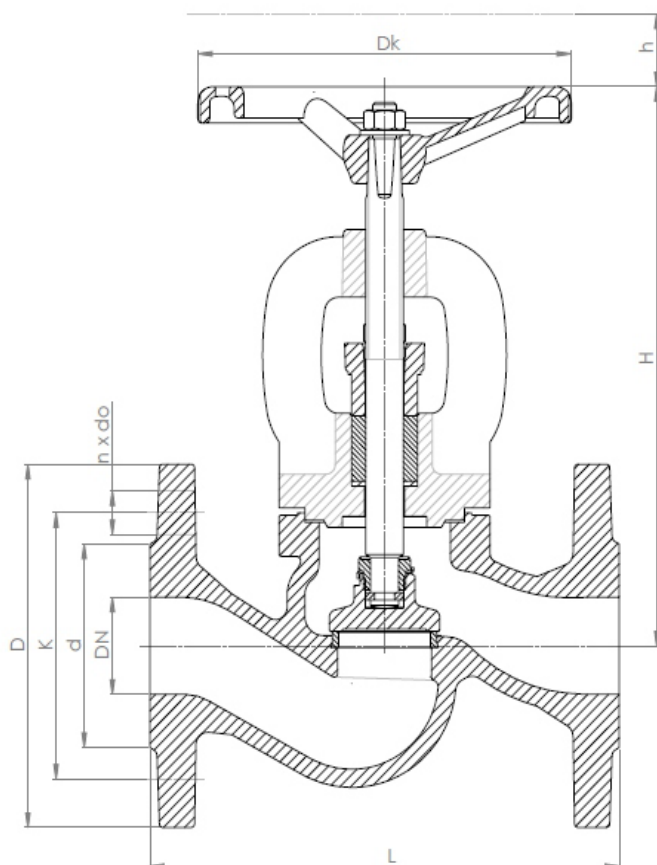


### MATERIALS AND PARTS

D) Cast steel Fig. 011430



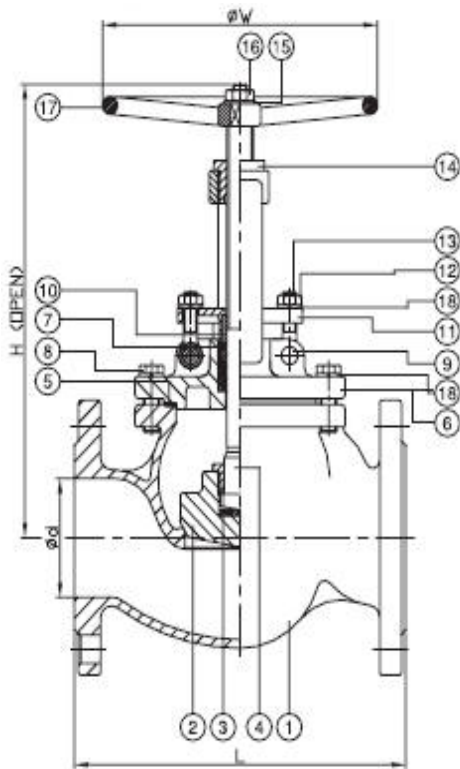
	Part	D - Fig. 011430
1	Body	GP240GH+N 1.0619
1.2	Seat ring	X20Cr13 1.4006
2	Bonnet	GP240GH+N 1.0619
3	Disc	X20Cr13 1.4021
4	Stem	X20Cr13 1.4021
5	Hand-wheel	EN-GJS-400-18-LT JS1025
6	Gland packing	All-graphite
7	Stud bolt	42CrMo5 1.7233
8	Nut	C35 1.1181
9	Gasket	Graphite+NiCr
10	Gland	11SMnPb30 1.0718
11	Ring	X20Cr13 1.4021
12	Washer	X6CrNiTi18-10 1.4541
13	Screw	X20Cr13 1.4021
14	Washer	Carbon steel + zinc galvanised
15	Nut	Carbon steel + zinc galvanised
16	Spring	X17CrNi16-2 1.4057
	Max. °C	400 °C



### DIMENSIONS

D) Cast steel Fig. 011430

DN	PN40									
	D	d	K	n x d	h	H	L	Dk	m <sup>3</sup> /h	KG
15	95	45	65	4x14	6	208	130	120	4,3	4,3
20	105	58	75	4x14	6	208	150	120	7,0	5,1
25	115	68	85	4x14	6	208	160	120	11,0	5,8
32	140	78	100	4x18	10	248	180	180	17,5	9,5
40	150	88	110	4x18	10	248	200	180	27,0	9,8
50	165	102	125	4x18	16,5	332	230	250	47,0	17,5
65	185	122	145	4x18	16,5	332	290	250	68,0	20,5
80	200	138	160	8x18	25	407	310	250	116,0	34
100	235	162	190	8x22	25	407	350	250	162,0	44
125	270	188	220	8x26	40	571	400	320	250,0	77
150	300	218	250	8x26	40	571	480	320	364,0	113
200	375	285	320	12x30	92	571	600	400	550,0	180



### MATERIALS, PARTS AND DIMENSIONS

E) Stainless steel Fig. 01401

DN	L	H	W		DN	L	H	W
15	130	178	140		80	310	325	250
20	150	151	140		100	350	390	250
25	160	200	140		125	400	472	300
32	180	243	160		150	480	531	350
40	200	245	160		200	600	669	350
50	230	258	200		250	730	824	500
65	290	310	200		300	850	950	500

	Part	E - Fig. 01401	
1	Body	ASTM A351-CF8M/1.4408	ASTM A351-CF8/1.4308
2	Disc	ASTM A351-CF8M/1.4408	ASTM A351-CF8/1.4308
3	Disc cover	ASTM A351-CF8M/1.4408	ASTM A351-CF8/1.4308
4	Stem	AISI-316	AISI-304
5	Seal	PTFE/304 + graphite	
6	Bonnet	ASTM A351-CF8M/1.4408	ASTM A351-CF8/1.4308
7	Packing	PTFE	
8	Bonnet bolt	AISI-304	
9	Hinge pin	AISI-304	
10	Sleeve	PTFE	
11	Gland	ASTM A351-CF8/1.4308	
12	Nut	AISI-304	
13	Eye bolt	AISI-304	
14	Yoke sleeve	BRONZE	
15	Name plate	AISI-304	
16	Nut	AISI-304	
17	Handwheel	FCD 400	
18	Spring washer	AISI-304	
	Max. °C	200 °C	