

SERIE 11  
 11200

# Swing Check valve

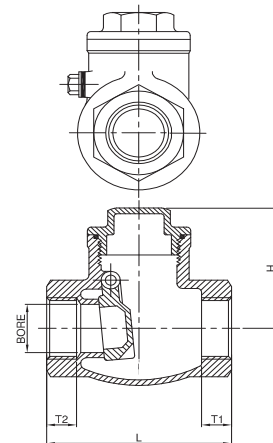
Nominal diameter options (DN) 8-50  
 Nominal pressure options (PN) 40-63  
 Maximum working temperature (°C) 180 °C



## FEATURES

- Screwed-in cap, swing type
- Full bore, st.st. disc
- f/f thread ISO 228-1G or ANSI B1.2.0.1 (NPT)
- Nominal pressure NB 8 (1/4") - NB 25 (1") : PN 63
- Nominal pressure NB 32 (1.1/4") - NB 50 (2") : PN 40
- PTFE seats and seals
- Working temperature -20°C upto 180°C

EU 97/23/EC NB CE 0035



## DIMENSIONS

Inch	DN	Bore mm	H mm	L mm	T1, T2 mm	Weight kg
1/4"	8	11	42	65	12	0,35
3/8"	10	13	42	65	12	0,35
1/2"	15	15	42	65	13	0,33
3/4"	20	20	51	80	15	0,42
1"	25	25	60	90	18	0,70
1" 1/4	32	32	66	105	19	1,00
1" 1/2	40	40	75	120	20	1,50
2"	50	50	80	140	22	2,10