

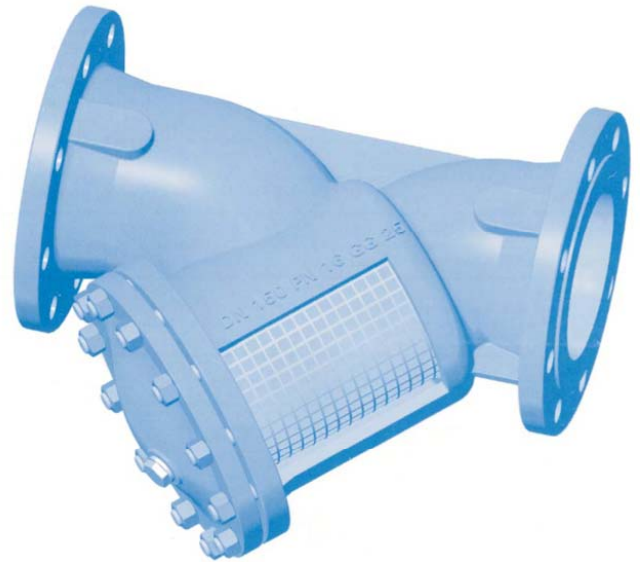
SERIE 12  
 1221

# Strainer with flanged ends, y-type

Nominal diameter options (DN) 15-400  
 Nominal pressure options (PN) 6-40  
 Maximum working temperature 400°C

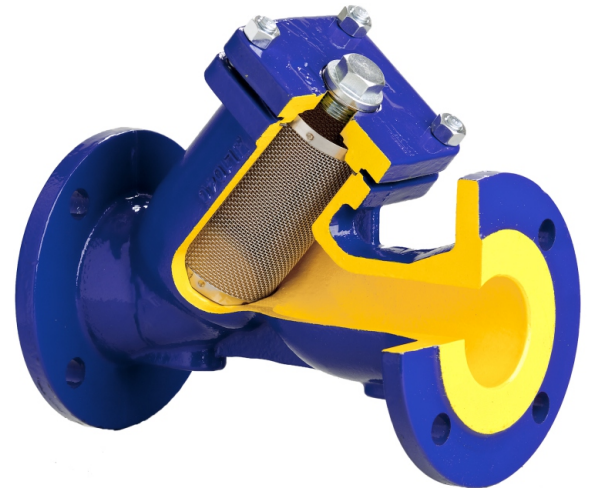
## TYPE 1221

- Strainer with flanged ends, y-type
- Applications: for different industrial purposes
- Mediums: water, steam, condensate, air, oil etc.
- Features:
  - Stainless steel
  - Strong body structure and screen
  - Cleaning of screen is possible without disassembling the strainer
  - Asbestos free, environment friendly



Flanges according to EN1092-2  
 Face-to-face length according to EN558-1

PN	DN	Maximum working temperature
PN6	DN15-200	200 °C
PN16	DN15-400	200 °C
PN25	DN15-300	350 °C
PN40	DN15-200	400 °C

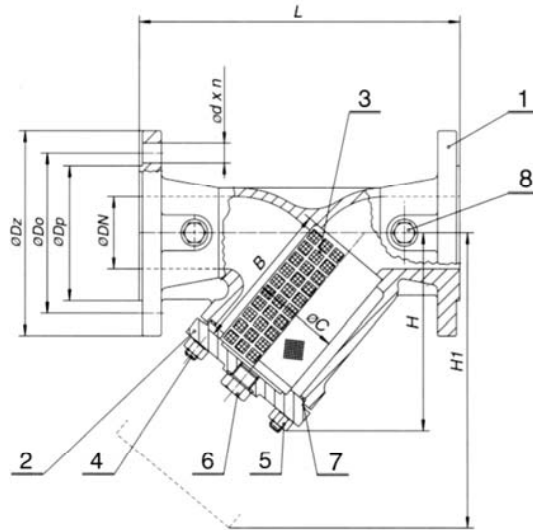


## MATERIALS

Type	Material body + bonnet	PN	DN
1221A	GG25	PN6	DN15-200
1221A	GG25	PN16	DN15-400
1221D	GGG50	PN16	DN15-300
1221D	GGG50	PN25	DN15-300
1221F	GS-C25 1.0619	PN40	DN15-200

GG25 = cast iron  
 GGG50 = ductile cast iron  
 GSC25 = steel

PART LIST



No.	Part	Material				
		PN6	PN16	PN16	PN25	PN40
1	Body	GG25	GG25	GGG50	GGG50	GS-C 02 1.0619
2	Bonnet	GG25	GG25	GGG50	GGG50	GS-C 02 1.0619
3	Strainer screen	X5CrNi 18-10 1.4301				
4	Studs	5.6	5.6	Ck35	Ck35	Ck35
5	Hexagon nuts	8	8	Ck35	Ck35	45 (C45), galvanized
6	Emptying screw	A2	A2	A2	A2	Ck35
7	Gasket	Graphit - CrNiSt				
8	Plug* (on request, with additional charge)	45 (C45), galvanized				
*	Plug gaskets	A4 (WNR-1.4571)				

STRAINER SCREEN / SCREEN CARTRIDGES

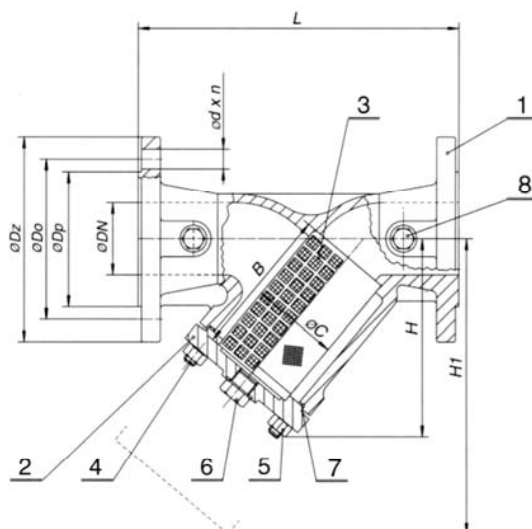
	Code	DN mm	Mesh ø	Meshs amount in cm <sup>2</sup>
Basic screens	F45	15-50	1,00	45
	F28	65-80	1,25	28
	F15	100-400	1,60	15
	F100	15-400	0,60	100
Special screens	F200	15-400	0,50	204
	F300	15-400	0,40	280
	F400	15-400	0,32	370
	F600	15-400	0,25	625

# Strainer with flanged ends, y-type

SERIE 12



## DIMENSIONS



DN	PN 6					PN 16				PN 25				PN 40			
	L	Dz	Dp	Do	n x d	Dz	Dp	Do	n x d	Dz	Dp	Do	n x d	Dz	Dp	Do	n x d
mm																	
15	130	80	40	55	4 x 11	95	41	65	4 x 14	95	46	65	4 x 14	95	45	65	4 x 14
20	150	90	50	65	4 x 11	105	46	75	4 x 14	105	56	75	4 x 14	105	58	75	4 x 14
25	160	100	60	75	4 x 11	115	56	85	4 x 14	115	65	85	4 x 14	115	68	85	4 x 14
32	180	120	70	90	4 x 14	140	65	100	4 x 19	140	76	100	4 x 19	140	78	100	4 x 18
40	200	130	80	100	4 x 14	150	76	110	4 x 19	150	84	110	4 x 19	150	88	110	4 x 18
50	230	140	90	110	4 x 14	165	84	125	4 x 19	165	99	125	4 x 19	165	102	125	4 x 18
65	290	160	110	130	4 x 14	185	99	145	4 x 19	185	118	145	8 x 19	185	122	145	8 x 18
80	310	190	128	150	4 x 18	200	118	160	8 x 19	200	132	160	8 x 19	200	138	160	8 x 18
100	350	210	148	170	4 x 18	220	132	180	8 x 19	235	156	190	8 x 23	235	162	190	8 x 22
125	400	240	178	200	8 x 18	250	156	210	8 x 19	270	184	220	8 x 28	270	188	220	8 x 26
150	480	265	202	225	8 x 18	285	184	240	8 x 23	300	211	250	8 x 28	300	218	250	8 x 26
200	600	320	258	280	8 x 18	340	211	295	12 x 23	360	274	310	12 x 28	375	285	320	12 x 30
250	730	-	-	-	-	405	266	355	12 x 28	425	330	370	12 x 31	-	-	-	-
300	850	-	-	-	-	460	319	410	12 x 28	485	389	430	16 x 31	-	-	-	-
350	980	-	-	-	-	520	370	470	16 x 28	-	-	-	-	-	-	-	-
400	1100	-	-	-	-	580	429	525	16 x 31	-	-	-	-	-	-	-	-

DN	B	C	H PN6,16,25 mm	H1 mm	H PN40 mm	KG PN6	KG PN16	KG PN25	KG PN40	KV m <sup>3</sup> /h
15	56	23	90	135	70	2,2	2,6	2,6	2,7	5,7
20	68	28	100	150	80	2,8	3,0	3,0	3,6	10,4
25	82	36	115	180	88	3,9	4,3	4,3	4,5	16,4
32	98	42	135	215	100	5,7	6,8	6,8	6,3	27,3
40	114	50	150	240	125	7,3	8,8	9,0	8,7	46,8
50	119	61,5	160	250	140	8,4	11,0	10,7	11,0	64,7
65	134	78,5	180	285	170	13,5	16,8	16,1	15,0	86,9
80	149	89,5	215	330	190	17,7	19,5	18,2	22,0	107,9
100	169	109,5	235	365	225	25,3	34,0	32,5	31,5	217,0
125	199	137,5	280	425	260	37,5	42,5	39,2	46,0	307,8
150	224	160	320	480	320	49,0	56,0	52,2	71,0	436,7
200	284	210	405	610	420	98,0	110,0	102,7	134,5	789,2
250	434	258	540	915	-	-	165,0	170,0	-	1061,0
300	555	308	680	1110	-	-	285,0	290,0	-	1250,0
350	640	365	755	1200	-	-	373,0	-	-	1800,0
400	695	415	835	1320	-	-	461,0	-	-	2200,0

PRESSURE-TEMPERATURE CHART

GG25		GGG50				GS-C125 1.0619			
PN6		PN16		PN16		PN25		PN40	
°C	bar	°C	bar	°C	bar	°C	bar	°C	bar
-10	6	-10	16	-10	16	-10	25	-20	40
120	6	120	16	120	16	120	25	150	40
150	5,4	150	14,4	150	15,2	150	23,8	200	35
180	5	180	13,4	200	14,4	200	22,5	300	28
200	4,8	200	12,8	250	12,8	250	20	400	21
230	4,4	-	-	300	11,2	300	17,5	-	-
250	4,2	-	-	350	8,8	350	13,8	-	-
300	3,6	-	-	-	-	-	-	-	-

ASSEMBLING INSTRUCTIONS

- Strainer should be installed to horizontal position, bonnet down
- The installaion to vertical position is possible when also the flow is from up to down
- The bonnet gasket should be changed always when the bonnet is removed

